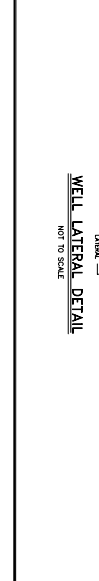
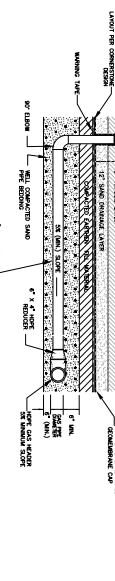
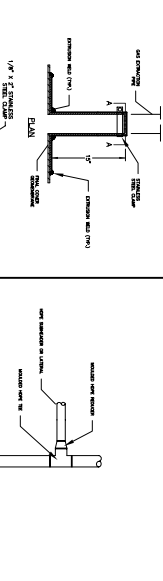
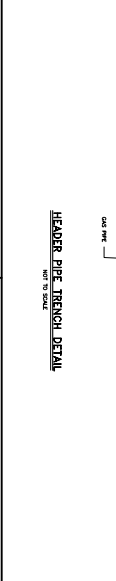
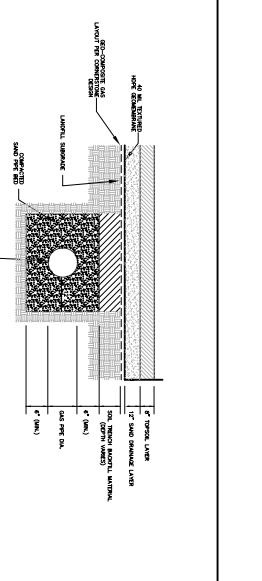
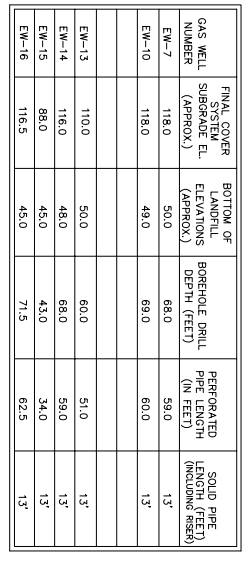
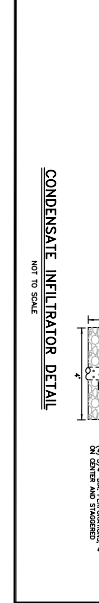
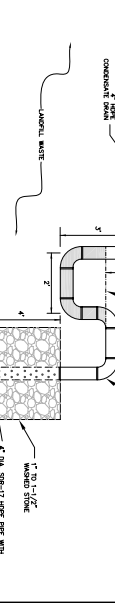
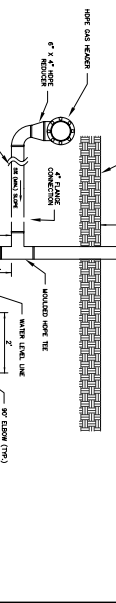
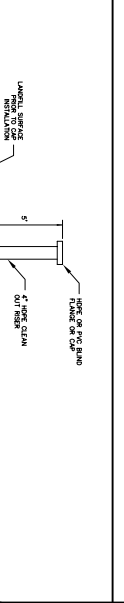
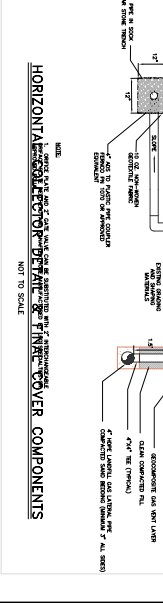
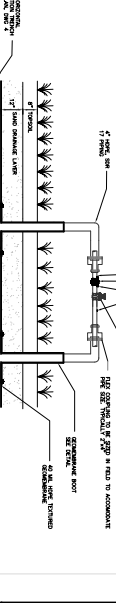
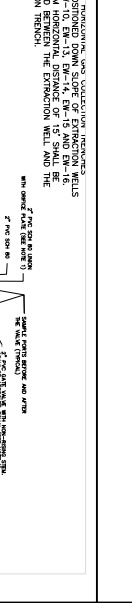
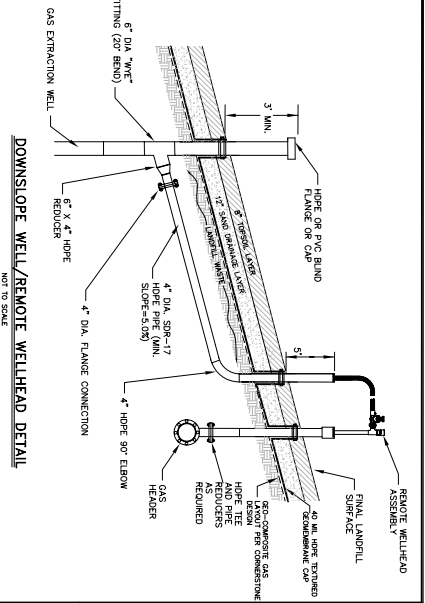


GAS EXTRACTION WELL DEPTH SCHEDULE

GAS WELL NUMBER	FINAL COVER SYSTEM SUBGRADE EL. (APPROX)	BOTTOM OF LANDFILL ELEVATIONS (APPROX)	BOREHOLE DRILL DEPTH (FEET)	PREFABRICATED PIPE LENGTH (IN FEET)	SOLID PIPE LENGTH (INCLUDING RISER)
EW-7	118.0	50.0	68.0	59.0	13'
EW-10	118.0	49.0	69.0	60.0	13'
EW-13	110.0	50.0	60.0	51.0	13'
EW-14	116.0	48.0	68.0	59.0	13'
EW-15	88.0	45.0	43.0	34.0	13'
EW-16	116.5	45.0	71.5	62.5	13'



No.	Date	Revision Description
1	12/20/06	Revised Details per Cornerstone Design
2	6/21/07	Added Detail for Composite Layer Gas Collection Beneath Membrane
3	6/27/07	ADDED SAMPLE PORTS, DIMENSIONS AND NOTATIONS TO TRENCH DETAIL

Project: CORRECTIVE ACTION DESIGN
CROW LANE LANDFILL
NEWBURYPORT, MASSACHUSETTS

Client: NEW VENTURES ASSOCIATES, L.L.C.

Scale: AS SHOWN
Date: MAR. 3, 2006
Drawn: JAC
Checked: MQ
Approved: ARQ

Drawing Title: LANDFILL GAS MANAGEMENT SYSTEM DETAILS

Acad No. 000
Site No. 000
Draw No. 000

SITEC ENVIRONMENTAL
Civil and Environmental Engineering
Land Use Planning and Surveying
Hazardous and Solid Waste Consultants

769 Plain Street, Unit C
Marblehead, MA 02050
PHONE (781) 318-8100
FAX (781) 854-4783